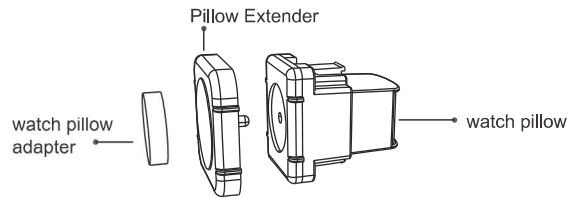


# Operation Manual

- Thank you for purchasing this great product.
- Please take a few minutes to read through the manual to ensure proper operation.
- Please keep the instruction manual for further reference.

ITEM NO.:G087

**The switch and adapter port can be found on the rear of the unit.**



◀ Put the watch pillow extender or watch pillow adapter on the watch pillow for larger size wrist watch. The pillow extender and the watch pillow adapter are included in the package.

## Item Specification

Power	AC adapter DC/4V 500mA		
Features	1.Clockwise, counterclockwise, and bi-directional (auto) settings 2.TPD (Turns Per Day) Mode A: 350TPD Mode B: 650TPD Mode C: 850TPD Mode D: 1050TPD Please note that the watch winder will turn, rest, and turn again for each setting. The watch winder will not turn constantly to prevent over winding of your watch. This is the normal operation for the watch winder.		
Size	133x106x156mm(WxHxD)		
Temperature	Operate between 5°C~+40°C		
Weight	About 360g (without adapter)	Accessory	AC Adapter

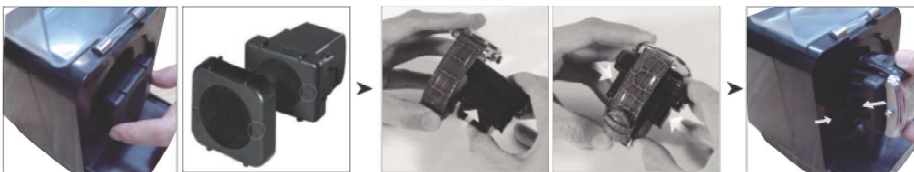
### Note:

- \* Please use the AC adapter supplied with the unit.  
Input: AC/100-240V, 50-60Hz  
Output: DC/4V 500mA
- \* Remove the adapter when the winder is not in use.
- \* Always turn off the power when inserting or removing watches.



## Operation:

1. Insert the adapter into the adapter port and plug it into the electrical outlet.
2. Open the front cover and use your index finger and thumb to hold the watch holder from both sides and gently pull out the watch holder.
3. Place the watch on the holder by pushing in the spring on the back of the holder, then put your watch around the holder and let go of the spring.
4. Once the watch is on the holder, place the holder back into the winder. Push until you hear a click signifying that it is securely in the winder.
5. To start operation, please set the interval and direction settings on the back of the watch winder.



## Attention:

- \* If you do not use this product for a long time, please unplug the adapter from the unit.
- \* Make sure to turn the unit off completely before attempting to pull out the watch pillow.
- \* For warranty information, please contact the retailer you purchased from.