

Instruction Manual

- Thank you for purchasing a Versa watch winder.
- Please take a few minutes to read through the manual to ensure proper operation.
- Please keep the instruction manual for future reference.
- The switch and adapter port can be found on the rear side of the unit.

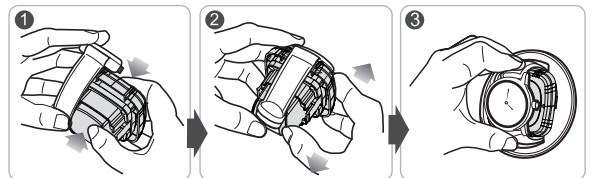


Item Specification

Power	AC adapter DC/4V 550mA
Size	9.30 x 8.10 x 10 inch (W x D x H)
Weight	3.968 lbs (without adapter)
Temperature	Operate between 5°C ~ 40°C
Accessory	AC Adapter

Operation

1. Insert the adapter into the adapter port and plug it into the electrical outlet.
2. Open the front cover, then use your index finger and thumb to hold the watch pillow from the two sides of the pillow hitch marked with two arrows. With some force, pull out the watch pillow.
3. Place the watch on the pillow by pushing in the spring on the back of the pillow, then put your watch around the pillow and let go of the spring.
4. Once the watch is on the pillow, place the pillow back into the winder. Push until you hear a click signifying that it is securely in the winder.
5. Use the switches on the unit to select as below: TPD (Turns Per Day)
 - * Use Power switch to select winder rotating direction or turn off the unit.
 - * Use TPD switch to select the TPD you wanted.
 - * 650TPD - 850TPD - 1050TPD - 1250TPD



Please note that the watch winder will turn, rest, and turn again for each setting. The watch winder will not turn constantly to prevent over winding of your watch. This is the normal operation for the watch winder.

Attention

- * If you do not use this product for a long time, please switch off the unit.
- * Make sure to turn the unit off completely before attempting to pull out the watch pillow.



Note

- * Please use the AC adapter supplied with the unit. Input: AC/100-240V, 50-60Hz Output: DC/4V 550mA
- * Remove the adapter when the winder is not in use.
- * Always turn off the power when inserting or removing watches.
- * Don't shake the watch winder when the winder is in operation.